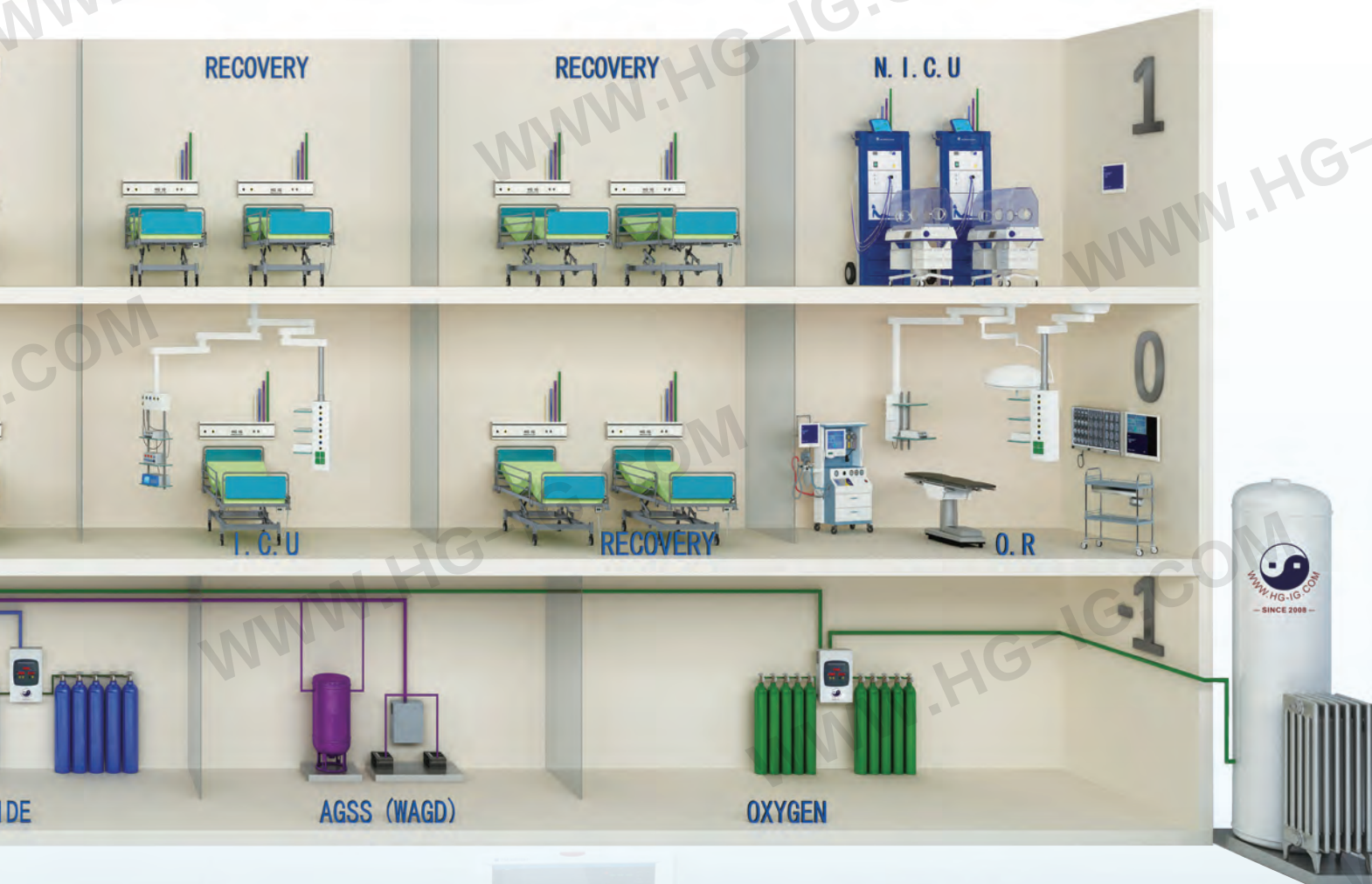


Caring your health is our duty!



NANJING OCEAN GROUP CO., LIMITED
NANJING OCEAN MEDICAL PRODUCTS CO., LTD

Medical Gases Equipments & Projects

Medical Instrument Manufacturer License & ISO13485 Certification

CONTENTS

PSA OXYGEN PLANT FOR HOSPITAL.....	03
CRYOGENIC LIQUID STORAGE TANK OXYGEN FOR HOSPITAL	04
SEAMLESS STEEL OXYGEN CYLINDER	05
SEAMLESS ALUMINUM OXYGEN CYLINDER	06
OXYGEN REGULATOR FOR GAS CYLINDER	07
OXYGEN CYLINDER TROLLEY	08
PROTABLE OXYGEN CONCENTRATOR	08
HOSPITAL OXYGEN MANIFOLD SUPPLY SYSTEM	09
HOSPITAL AIR SUPPLY SYSTEM	10
HOSPITAL VACUUM SYSTEM	11
HOSPITAL ANESTHESIA EXHAUST SYSTEM	12
BED HEAD UNIT	13
HOSPITAL SURGICAL PENDANT / BRIDGE / COLUMN	14
HOSPITAL GAS OUTLET	16
HOSPITAL WALL MOUNTED GAS FLOWMETER	20
VACUUM REGULATOR WITH SUCTION BOTTLE	21
NURSE CALLING SYSTEM	22
HOSPITAL GAS ALARM	23
ZONE VALVE WITH BOX	23
HOSPITAL GAS HOSE	24
ELECTRIC SUCTION APPARATUS	24
MANUAL RESUSCITATORS	25

NANJING OCEAN MEDICAL



"Nanjing Ocean Medical" is located in Jiangbei New Area of Nanjing city. We have two manufacturing plants in Nanjing & Taizhou city, which export hospital medical products to overseas markets in Southeast Asia/ Middle East/ Africa/ South America/ North America, receiving high acclaim from overseas customers.

As a professional manufacturer of medical gas equipment and accessories, we have passed quality management system certification such as ISO9001 & ISO13485, and our products are certified according to GB5099, GB150, ISO9809, ISO7866, CE & China's Class I Medical device license.

With the globalization of the economy, we have always adhered to the principle of "Quality First, Customer Supreme", strengthening cooperation with both domestic and international partners. Using the First-Class quality & reputation for the Chinese medical gas device industry from "Made In China" to make the transition to "Designed In China" to make our due contribution. Today's efforts are for tomorrow's success.

We believe that we will be your permanent partner in the future.

"Caring for Your Health is Our Duty"

---The Professional Manufacturer Solution of Gas Equipment From China.

PSA OXYGEN PLANT FOR HOSPITAL

PSA (Pressure Swing Adsorption) Technology is a revolution in Non-Cryogenic Air Separation and Oxygen Generation Technology, utilizing a special grade of ZMS (Zeolite Molecular Sieve). The compressed air is passed through a Twin-Tower PSA module, interconnected with automatic changeover valves. After passing through a Refrigerated Dryer, the air is dried. Dried compressed air then comes into contact with a bed of Zeolite molecular sieves (ZMS). Zeolite Molecular Sieves are a special grade of adsorbent with the property of preferentially adsorbing nitrogen molecules. At a time one tower remains under nitrogen production cycle, whereas the other tower undergoes regeneration which is achieved through depressurization of the tower to atmospheric pressure. The outgoing oxygen gas is sent to a surge vessel, where the minimum pressure is maintained with the help of a Back pressure Regulator.



Model	Flow Rate	Hospital Size	Dew Point	Outlet Pressure	Purity
HG-IG-PSA-3	3.0 NM3/h	15 Beds	$\leq -40^{\circ}\text{C}$	4~7 Bar	90~96%
HG-IG-PSA-5	5.0 NM3/h	25 Beds			
HG-IG-PSA-10	10.0 NM3/h	50 Beds			
HG-IG-PSA-15	15.0 NM3/h	75 Beds			
HG-IG-PSA-20	20.0 NM3/h	100 Beds			
HG-IG-PSA-30	30.0 NM3/h	150 Beds			
HG-IG-PSA-50	50.0 NM3/h	250 Beds			
HG-IG-PSA-100	100.0 NM3/h	500 Beds			
HG-IG-PSA-200	200.0 NM3/h	1000 Beds			

* Using High Pressure Booster to Increase the Pressure to 150bar or 200bar and Filling into Oxygen Gas Cylinders

* The Machine's ambient temperature of using is $+5^{\circ}\text{C} \sim +45^{\circ}\text{C}$

* The technology specifications are only for the plant altitude above sea level less 800m

CRYOGENIC LIQUID STORAGE TANK OXYGEN FOR HOSPITAL

The Cryogenic Liquid Storage Tank Oxygen Supply System is a complete system for supplying oxygen gas to the Medical Gas Pipeline System(MGPS) in Hospitals. The system includes Cryogenic Liquid Storage Tank, Vaporizer, Pressure Reducer, Manifold System, which connects to the Pipeline System in the Hospital Rooms.



Model	Capacity	Work Pressure	Extra Vaporizer	Regulator
HG-IG-GB-MB3-33	3.0M3	33.0 bar	No	No
HG-IG-GB-MB5-33	5.0M3			
HG-IG-GB-MB7.5-33	7.5M3			
HG-IG-GB-MB3-23	3.0M3	23.0 bar		
HG-IG-GB-MB5-23	5.0M3			
HG-IG-GB-MB7.5-23	7.5M3			
HG-IG-GB10-16	10.0M3	16.0 bar	Yes	Yes
HG-IG-GB15-16	15.0M3			
HG-IG-GB20-16	20.0M3			
HG-IG-GB30-16	30.0M3			
HG-IG-GB15-8	15.0M3			

SEAMLESS STEEL OXYGEN CYLINDER

Choosing our medical oxygen cylinders with regulator & oxygen mask to fight the Covid-19 epidemic. Our multiple types seamless steel gas cylinders' size from 1L to 80L as customers' requirements, which can be manufactured as the Standard ISO9809 / GB5099 / DOT-3AA / EN1964-1.



Cylinder Model	O.D (mm)	Water Capacity(L)	Height (mm)	Weight (kg)	Design Thickness (mm)	Material (Steel)	W.P (bar)	T.P (bar)
HG89-1.0-150	Φ89	1.0	240	1.8	Min 3.0	37Mn	150	250
HG89-1.2-150		1.2	270	2.0				
HG89-1.4-150		1.4	310	2.3				
HG89-2.0-150		2.0	425	2.9				
HG108-2.0-150	Φ108	2.0	318	3.5	Min 3.2			
HG108-3.4-150		3.4	490	4.7				
HG108-4.0-150		4.0	570	5.3				
HG121-3.4-150	Φ121	3.4	405	5.3	Min 3.2			
HG121-4.0-150		4.0	485	5.8				
HG121-5.0-150		5.0	580	6.8				
HG140-3.6-150	Φ140	3.6	350	5.2	Min 3.6			
HG140-4.0-150		4.0	365	6.5				
HG140-5.0-150		5.0	427	7.6				
HG140-6.7-150		6.7	535	9.4				
HG140-8.0-150		8.0	650	11.0				
HG140-10.0-150		10.0	810	12.3				
HG140-13.4-150		13.4	1085	17.0				
HG152-8.0-150	Φ152	8.0	590	10.8	Min 4.0			
HG152-10.0-150		10.0	710	12.6				
HG159-8.0-150	Φ159	8.0	540	10.5	Min 4.2			
HG159-10.0-150		10.0	650	12.8				
HG159-13.4-150		13.4	865	16.2				
HG159-15.0-150		15.0	945	18.1				
HG165-15.0-150	Φ165	15.0	890	19.3	Min 4.3			
HG165-20.0-150		20.0	1610	28.3				
HG219-20.0-150	Φ219	20.0	715	28.0	Min 5.7			
HG219-40.0-150		40.0	1315	47.5				
HG219-50.0-150		50.0	1610	57.5				
HG232-40.0-150-5.4	Φ232	40.0	1175	43.0	Min 5.4			
HG232-47.0-150-5.4		47.0	1360	50.2				
HG232-50.0-150-5.4		50.0	1435	51.8				
HG232-40.0-150-6.0		40.0	1180	47.4	Min 6.0			
HG232-47.0-150-6.0		47.0	1370	54.5				
HG232-50.0-150-6.0		50.0	1450	57.5				
HG267-68.0-150	Φ267	68.0	1505	73.0	Min 6.4			
HG267-70.0-150		70.0	1533	75.5				
HG267-80.0-150		80.0	1725	84.5				
HG232-50.0-200-5.8	Φ232	50.0	1450	57.8	Min 5.8	34CrMo4	200	300
HG232-50.0-200-5.2			1420	52.0	Min 5.2			

SEAMLESS ALUMINUM OXYGEN CYLINDER

Choosing our medical oxygen cylinders with regulator & oxygen mask to fight the Covid-19 epidemic. Our multiple types seamless aluminium gas cylinders' size from 0.5L to 50L as customers' requirements, which can be manufactured as the Standard ISO7866 / GB11640 / DOT-3AL / EN1975.



Cylinder Model	O.D (mm)	Water Capacity (L)	Height (mm)	Weight (kg)	Material	W.P(Bar)	T.P(Bar)
HG60-0.5-300-5.6	Φ60	0.5	325	0.9	Aolly 6061	300	450
HG60-0.6-300-5.6		0.6	380	1.0			
HG60-0.7-300-5.6		0.7	433	1.1			
HG60-0.5-150-3.0		0.5	267	0.4		150	250
HG60-0.6-150-3.0		0.6	310	0.5			
HG60-0.7-150-3.0		0.7	379	0.7			
HG89-1.0-150-4.5	Φ89	1.0	206	1.0			
HG89-1.4-150-4.5		1.4	367	1.3			
HG89-1.7-150-4.5		1.7	415	1.7			
HG108-1.0-150-5.5	Φ108	1.0	210	1.3			
HG108-1.4-150-5.5		1.4	264	1.6			
HG108-2.0-150-5.5		2.0	365	2.2			
HG108-3.0-150-5.5		3.0	490	3.0			
HG111-2.0-150-5.4	Φ111	2.0	318	2.1			
HG111-2.5-150-5.4		2.5	390	2.5			
HG111-2.9-150-5.4		2.9	442	2.8			
HG111-4.0-150-5.4		4.0	572	3.4			
HG111-4.6-150-5.4		4.6	648	3.7			
HG140-6.0-150-6.8	Φ140	6.0	551	4.8			
HG140-8.0-150-6.8		8.0	711	6.1			
HG140-10.0-150-6.8		10.0	870	7.3			
HG159-10.0-150-8.0	Φ159	10.0	711	8.2			
HG180-10.0-150-8.8	Φ180	10.0	406	8.4			
HG203-12.0-150-9.9	Φ203	12.0	552	11.8			
HG203-13.4-150-9.9		13.4	606	12.7			
HG203-15.0-150-9.9		15.0	666	13.7			
HG203-20.0-150-9.9		20.0	856	16.8			
HG232-30.0-150-11.6	Φ232	30.0	1236	23.0			
HG232-40.0-150-11.6		40.0	1281	30.0			
HG232-50.0-150-11.6		50.0	1573	36.4			
HG250-50.0-200-16.2	Φ250	50.0	1477	50.2		200	300

MEDICAL REGULATOR FOR OXYGEN CYLINDER

MEDICAL REGULATOR (INHALER) WITH FLOWMETER AND HUMIDIFIER BOTTLE

* Used with High-Pressure Gas Cylinders

* Medium Gas: Oxygen/ Air

* Flowmeter: 0-10LPM/ 0-15LPM

* Max Inlet Pressure: 3000 PSI

Model	Humidifier Bottle(mm)	Inlet Pressure (bar)	Flow Rate (LPM)	Outlet Pressure(bar)	Outlet Connector	Cylinder Valve's Thread
HG-IG-R001(A)	150/250/300/500	150/200	0-5/10/15/70	3.0	Hose Barb 6-8mm	G5/8 & G3/4 & CGA540 & W21.8--Male
HG-IG-R001(B)						
HG-IG-R001(C)						
HG-IG-R001(D)						G5/8 --Female
HG-IG-R001(E)						G5/8 -Female
HG-IG-R001(F)						CGA870



HG-IG-R001(A)- Medical Regulator KIT with Female Connector



HG-IG-R001(B)- Medical Regulator KIT with Female Connector



HG-IG-R001(C)- Medical Regulator KIT with Female Connector



HG-IG-R001(D)- Medical Regulator KIT with Male Connector



HG-IG-R001(E)- Medical Regulator KIT with Vertical Male Connector



HG-IG-R001(F)- Medical Regulator KIT with CGA870 Connector

HG-IG-R001(F)-CLICK TYPE MEDICAL REGULATOR (INHALER) WITH FLOWMETER

Click Type is available in 50psi preset
Available with a Nut and Nipple or Yoke Style

Available in a variety of inlet pressure
Available in a variety of colors (Green is standard)

Aluminum body with brass core to ensure safety

Flowmeter available in 0-4 LPM, 0-8LPM, 0-15LPM



HG-IG-R001(F1)

HG-IG-R001(F2)

HG-IG-R001(F3S)

HG-IG-R001(F3M)

HG-IG-R001(F3L)

OXYGEN CYLINDER TROLLEY



HG-IG-CT001



HG-IG-CT002



HG-IG-CT003



HG-IG-CT004



HG-IG-CT005



HG-IG-CT006

PORTABLE OXYGEN CONCENTRATOR

OXYGEN GENERATOR

Adopt noise reduction technology, low noise operation, no sleep disturbance;

Low-temperature and low-pressure operation, integrated with a high-efficiency adsorber and imported lithium molecular sieve, ensures a continuous oxygen supply;

Dedicated oil-free compressor with an independently developed main control board and a built-in early warning system to monitor the running status of the whole machine;

Intelligent large-screen display with voice broadcast, remote control, easy operation.

Model	Oxygen	Nebulizer	Remote control	Oxygen Flow Rate(L/min)	Output pressure (MPa)	Input power (VA)	N.W. (kg)	G.W. (kg)	Dimension(mm)	Packing size (mm)	Noise (dB)
SL-3C-550	√	√	√	0-10	0.045-	630	27	29	395*350*620	484*435*710	≤60
SL-3C-510	√	√	√	0-5	0.08	480	26	28	395*350*620	484*435*710	≤60



10LPM Oxygen Concentrator
With Two Outlets
With Two Humidifier bottles



The Back side for
5LPM & 10LPM Oxygen Concentrator



5LPM Oxygen Concentrator
With One Outlet
With One Humidifier bottle

HOSPITAL OXYGEN MANIFOLD SUPPLY SYSTEM

AUTOMATIC MANIFOLD



Type A

Gas Type Options: Oxygen, Air, N₂O, CO₂, N₂
Dome-loaded regulator
Optional include heaters
Input Power: 110VAC to 240VAC, 50Hz to 60Hz
Continue working, even in the event of a power failure
Pressure Gauges with changeover alarm function
Light indicators to display system status
Max Flow: 100m³/h



Type B



Type C

SEMI-AUTOMATIC MANIFOLD



Gas Type Options: Oxygen, Air, N₂O, CO₂, N₂
Designed to accommodate future expansion needs
High quality brass master shut-off valve included
Secondary regulator stabilizes gas flow rate in the main pipeline
CGA-specific gas pigtail connections
Easy to install
Maximum pressure: 3,000 psig

HOSPITAL AIR SUPPLY SYSTEM

Designed and manufactured in accordance with the ISO 13485 standard

Integrated armored redundant design ensures continuous gas supply in the event of a single point of failure ;

New design of pipe joints and connectors reduces potential leak points, reducing energy loss;
Intake, exhaust, electrical and single-point connections of the sewage system;

Touchscreen control provides system operation, alarms, warnings, maintenance and event logs, etc;



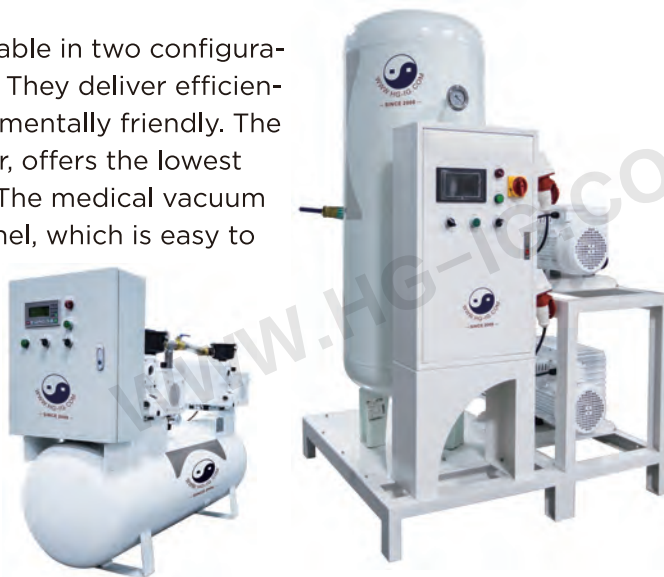
Model (Free-Oil 8bar)	Flow Rate of Each (m ³ /min)	Power of Each (kw)	Flow Rate of Drdryer (m ³ /min)	Flow Rate of Catch Water (m ³ /min)	Deoil (1um,0.1mg/m ³)	Dust Removal Filter (3um,m ³ /min)	High-Precision Filter (0.01um,0.01mg/m ³)
HG-IG-AF3.7II	0.41	3.7	1.6	1.3	0.57	0.57	0.57
HG-IG-AF5.5II	0.62	5.5	1.6	1.3	1.3	1.3	1.3
HG-IG-AF7.5II	0.82	7.5	1.6	1.3	1.3	1.3	1.3
HG-IG-AF11.0II	1.24	11	1.6	2.8	2	2	2
HG-IG-AF15.0II	1.62	15	2.4	2.8	2	2	2

Model (Micro-Oil 8bar)	Flow Rate of Each (m ³ /min)	Power of Each (kw)	Flow Rate of Drdryer (m ³ /min)	Flow Rate of Acticarbon Filter (m ³ /min)	Deoil (1um,0.1mg/m ³)	Dust Removal Filter (3um,m ³ /min)	High-Precision Filter (0.01um,0.01mg/m ³)
HG-IG-AM5.5II	0.75	5.5	1.6	1.3	1.3	1.3	1.3
HG-IG-AM7.5II	1.05	7.5	1.6	1.3	1.3	1.3	1.3
HG-IG-AM11.0II	1.6	11	1.6	2	2	2	2
HG-IG-AM15.0II	2.3	15	2.4	2.8	2.8	2.8	2.8

HOSPITAL VACUUM SYSTEM

OCEAN Medical Vacuum Pump Systems are available in two configurations: modular mount and horizontal tank mount. They deliver efficiency and superior performance while being environmentally friendly. The system does not require the use of recycled water, offers the lowest operating costs, and features simple installation. The medical vacuum system uses the Schneider brand LCD control panel, which is easy to maintain. The vacuum pump is available in Simplex, Duplex, Triplex or Quad configurations, with different capacity receiver tank available to meet varying client requirements.

- NFPA99 and HTM2022 compliant
- Application: Medical or Laboratory
- Available in Simplex, Duplex, Triplex, Quad configurations
- LCD control panel to show vacuum information



Model (Free-Oil) (-0.35-0.8bar)	Flow Rate of Each (m ³ /H)	Power of Each (kw)	Total Flow Rate (m ³ /H)	Dust Removal Filter (3um,m ³ /min)	High-Precision Filter (0.01um,0.01mg/m ³)
HG-IG-VF1.5II	60	1.5	120	120	100
HG-IG-VF2.2II	100	2.2	200	280	220
HG-IG-VF3.0II	150	3	300	400	350
HG-IG-VF4.0II	211	4	422	520	420
HG-IG-VF5.5II	300	5	600	750	650
HG-IG-VF1.5III	60	1.5	180	200	150
HG-IG-VF2.2III	100	2.2	300	400	350
HG-IG-VF3.0III	150	3	450	520	520
HG-IG-VF4.0III	211	4	633	750	650
HG-IG-VF5.5III	300	5	900	1200	1000

Model (Micro-Oil) (-0.35-0.8bar)	Flow Rate of Each (m ³ /H)	Power of Each (kw)	Total Flow Rate (m ³ /H)	Dust Removal Filter (3um,m ³ /min)	High-Precision Filter (0.01um,0.01mg/m ³)
HG-IG-VM1.5II	40	1.5	80	120	100
HG-IG-VM1.75II	50	1.75	100	200	150
HG-IG-VM2.2II	63	2.2	126	280	220
HG-IG-VM3.0II	100	3	200	400	350
HG-IG-VM4.0II	150	4	300	520	420
HG-IG-VM5.5II	200	5.5	400	520	650
HG-IG-VM7.5II	300	7.5	600	750	650
HG-IG-VM1.5III	40	1.5	120	200	150
HG-IG-VM1.75III	50	1.75	150	280	220
HG-IG-VM2.2III	63	2.2	189	400	350
HG-IG-VM3.0III	100	3.7	300	520	520
HG-IG-VM4.0III	150	4	450	520	650
HG-IG-VM5.5III	200	5.5	600	750	1000
HG-IG-VM7.5III	300	7.5	900	1200	1000

HOSPITAL ANESTHESIA EXHAUST SYSTEM

Nanjing Ocean AGSS device is equipped with a LCD panel, that monitors signals from the sensor and provides an alarm system. Key information can be displayed on the control panel.

It provides a maximum flow rate of 120 m³/h. It's an active system that removes anaesthetic gas in any other areas fitted with nitrous mixtures from operating rooms and any other areas fitted with nitrous oxide terminal units.

Features include:

Integrated armored design with a single-point connection

Flexible connections for the suction and exhaust ports

7-inch color touchscreen AGSP control system

Three working modes: Manual, Stop, and Remote Control

Power failure recovery with self-starting and remote control capabilities



Model	Flow Rate of Each (m ³ /H)	Power of Each (kw)	Total Flow Rate (m ³ /H)	High-Precision Filter (0.22um,0.01mg/m ³)	Tank for Water (L)	Power for Rinsing (kw)
HG-IG-AGSS-0.75II	72	0.75	144	220	30	0.37
HG-IG-AGSS-1.5II	160	1.5	320	520	30	0.37
HG-IG-AGSS-2.2II	270	2.2	540	650	30	0.37
HG-IG-AGSS-3.0II	318	3	636	1000	80	0.5
HG-IG-AGSS-4.0II	360	4	720	1200	80	0.5

BED HEAD UNIT

Made from aluminum alloy, the design and functionality are tailored to meet the needs of both patients and hospital users

Electrical services and medical gases are separated by trunks to ensure safety

Easy to install and maintain

Completely modular and are customizable



Model: HG-IG-BHU-VIP002



Model: HG-IG-BHU-VIP003



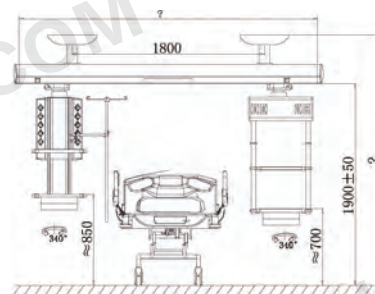
Model: HG-IG-BHU-VIP004



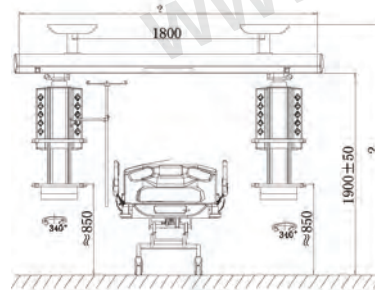
HOSPITAL SURGICAL PENDANT / BRIDGE / COLUMN



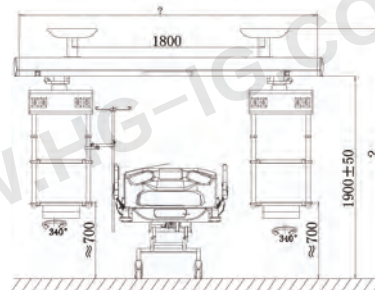
BRIDGE TYPE MEDICAL PENDANT



HG-IG-ICU-B



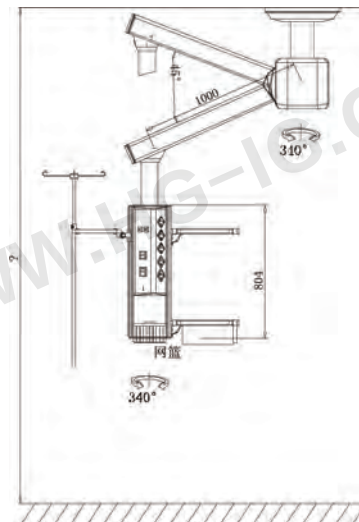
HG-IG-ICU-B1



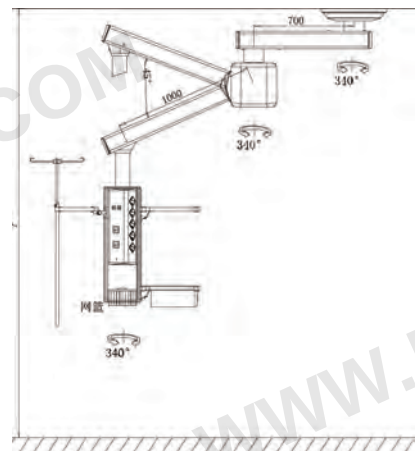
HG-IG-ICU-B2



OPERATING THEATER PENDANT



HG-IG-TPE-1



HG-IG-TPE-2

HOSPITAL GAS OUTLET

BRITISH STANDARD GAS OUTLET

Available in wall type with box,console type on bed head unit and hose bard type

Secondary isolating valve enables easy maintenance,without shutting down the pipeline system

Complies with BS EN737-1 and HTM 02-01

100% pressure and leak tested

Color coded according to BS EN 737-1 color



Standard	Installed Way	Gas Type	OD SIZE
BS	WAL:Wall Type	OXY,AIR4,AIR7,N2O,CO2	8mm
	CON:Console Type		10mm
			12mm

JAPANESE STANDARD GAS OUTLET

Complies with JIS and CGA Standard

100% pressure and leak tested

Available in wall type with box, console type on bed head unit and hose bard type

Secondary isolating valve enables easy maintenance,without shutting down the pipeline system

Color coded according to JIS color standard



Standard	Installed Way	Gas Type	OD SIZE
JIS	WAL:Wall Type	OXY,AIR4,AIR7,N2O,NIT,CO2	8mm
	CON:Console Type		10mm
			12mm

AMERICAN STANDARD GAS OUTLET

Complies with NFPA99 and CGA standard

100% pressure and leak tested

Available in wall type with box, console type on bed head unit and hose bard type

Universal rough-in common for all outlets

NFPA full color standard for easy gas identification



Standard	Installed Way	Gas Type	OD SIZE	
OHMEDA	WAL:Wall Type	OXY:OXYGEN	8mm	
DISS		AIR4:MEDICAL AIR 4Bar		
		AIR7:MEDICAL AIR 7Bar	10mm	
CHEMETRON	CON;Console type	VAC:VACUUM		
PURITAN-BENNETT		N2O:NITROUS OXIDE	12mm	
		NIT:NITROGEN		
		CO2:CARBON DIOXIDE		

AUSTRALIAN STANDARD(CIG) GAS OUTLET

Available in wall type with box,console type on

bed head unit and hose bard type

Secondary isolating valve enables easy maintenance,without shutting down the pipeline system

Complies with BS EN737-1 and HTM 02-01

100% Pressure and leak tested



Standard	Installed Way	Gas Type	OD SIZE
CIG	WAL:Wall Type	OXY,AIR4,AIR7,VAC, N2O,CO2	8mm
	CON:Console Type		10mm
			12mm

GERMAN STANDARD GAS OUTLET

Available in wall type with box, console type on bed head unit and hose bard type

Secondary isolating valve enables easy maintenance, without shutting down the pipeline system

Complies with DIN 13260-2 ISO9170-1 Standard

100% pressure and leak tested

Color coded according to ISO32 color



Standard	Installed Way	Gas Type	OD SIZE
DN	WAL:Wall Type	OXY,AIR4,AIR7,N2O,CO2	8mm
	CON:Console Type		10mm
			12mm

FRENCH STANDARD GAS OUTLET

Complies with NF EN 737-1:1998 Standard

100% pressure and leak tested

Available in wall type with box, console type on bed head unit and hose bard type

Quick connections with no risk of gas cross-connection

Color coded according to ISO32 color



Standard	Installed Way	Gas Type	OD SIZE
AFNOR	WAL:Wall Type	OXY,AIR4,AIR7,VAC, N2O,NIT,CO2	8mm
	CON:Console Type		10mm
			12mm

Y-TYPE(THREE WAY) GAS OUTLET



CIG-O2-Y-Type Outlet



Ohmeda-O2-Y-Type Outlet



JIS-O2/AIR/VAC-Y-Type Outlet

AGSS GAS OUTLET

AGSS gas outlets used for safe removal of excess anesthetic gas and anesthetic adaptors

- * Flow: 25-50L/min (pressure drop: 0.15-0.29 psi)
- * Air driving flow: 10-15 L/min (pressure: 58 psi)
- * 100% tested for flow, leaks and cleaned
- * Removable front assembly



HOSPITAL WALL MOUNTED GAS FLOWMETER

HG-IG Medical flowmeters are instant flow measuring devices suitable for the dosage of medical gases. They are available in single or twin configurations, allowing for double and independent gas supply using a single gas source. Flowmeters shall be supplied with gas-specific probes and only attach to the corresponding medical gas terminal unit. Use in a clinical environment. The pressure dome and accuracy are tested to ensure the safety of both user and patient. Calibrated at 50 psi inlet pressure.

Work Pressure	4.5bar
Setting Ranges	0-1.5LPM 1-15LPM 1-30LPM 1-70LPM
Accuracy of flow rate	310%
Screw thread for accessory	M 10*1 or 1/8" adapter
Material	Flowmeter Aluminum or Brass Humidifier Bottle Polycarbonate Plastic



HG-IG-F001(A)

HG-IG-F001(B)

HG-IG-F001(C)

HG-IG-F001(D)

HG-IG-F001(E)



HG-IG-H001(A)

HG-IG-H001(B)

HG-IG-H001(C)

HG-IG-H001(D)

HG-IG-H001(E)

DISPOSABLE TYPE HUMIDIFIER BOTTLE



HG-IG-H001(F1)

HG-IG-H001(F2)

HG-IG-H001(F3)

VACUUM REGULATOR WITH SUCTION BOTTLE

SUCTION REGULATOR

Negative pressure regulating valve
working pressure of 0-760mmhg/
0-300mmhg(adjustable)
Large control knob for easy vacuum
adjustment
Vacuum trap prevents overflow of
waste and adjustable
Different standard adaptor optional



SUCTION JAR

Offered in three sizes: 1000ml, 2000ml, 4000ml
Bottles are made of polycarbonate, which can be
autoclaved
European Class B standard sterilizer
Quick-opening cover for easy replacement
Scale line easy to read



NURSE CALLING SYSTEM

HOST MACHINE

The host machine of the nurse call system is part of the nurse call system and has two-way calling and intercom functions.

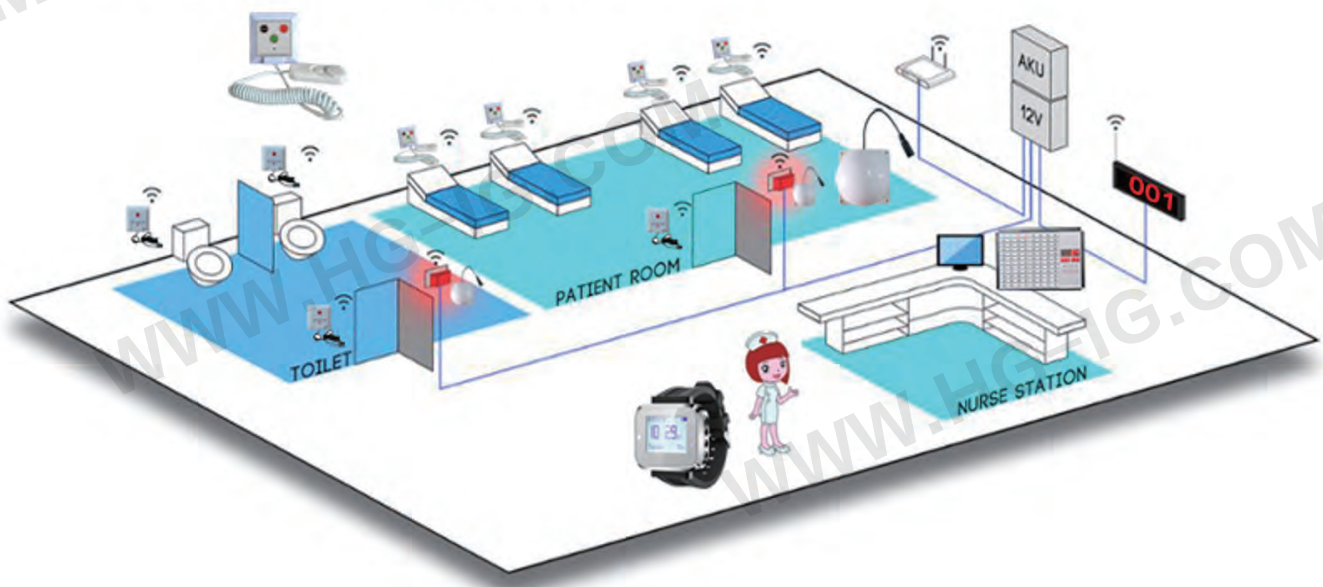
NURSE CALL EXTENSION

Nurse call extension is part of the nurse calling system. It is in fixed connection with extensions, with the main function of calling, indicating, resetting.

DISPLAY SCREEN

The nurse call display screen is an important part of the nurse call system and a versatile display that displays calling information and time.

**When the patient press the button
the nurse watch/display screen/corridor light will get the prompting
so that the patient can get the aid in time**



HOSPITAL GAS ALARM

AREA GAS ALARM(LED)

HG-IG-AR3 series of LED Area Alarm actively displays your medical gas information on a highly visible 10.4" LED screen. Touch Display, Capable of handling up to 8 gases, Designed with both sound and light alarm. The high-quality pressure sensor ensures reliable performance.



MASTER GAS ALARM

HG-IG Medical Master Alarm is a professional accurate design for hospital monitor and managed area alarm. It can be connected to a building management system and supports up to 80 signal, making it easy to monitor hospital medical gases.

ZONE VALVE WITH BOX

ZONE VALVE BOX(AVSU)

HG-IG Medical Multiple Zone Valve Boxes are available in single-house (1 valve) or multiple-house (2 to 6 valves) configurations, accommodating a variety of sizes. All valves are oxygen-cleaned. Material brass valve and stainless steel valve optional. Features a pull-out with ring

GAS VALVE SET

3-pieces ball type design for easy maintenance
100% gas and pressure tested
Cleaned for medical gas service
Available in sizes 1/2" to 2-1/2"
Full-Port design



HOSPITAL GAS HOSE

MADICAL GAS HOSE

Available in custom lengths and configurations

Available in a variety of gases

Available in USA and ISO colors



ELECTRIC SUCTION APPARATUS

HG-IG-H001/ H002

It adopts oil-free piston pump, easy for cleaning and daily maintenance. Stable pressure ensures safer operation. The anti-overflow valve shuts down the machine when pressure surpassed, for the liquid won't flow backwards.

With a completely plastic panel design, the product looks more fancy and fashionable. Easy to carry, low noise, high negative pressure and large flex. It can be widely applied in the surgical operations, which needs to absorb phlegm, thick liquid and etc.



Note: Not suitable for continuous use
Not suitable for induced abortions or plural negative pressure suction
Max continuous working time is 30 minutes

Power supply:
AC 220V 50Hz
Max Negative Pressure: $\geq 0.09\text{Mpa}$
Noise: $\leq 65\text{db(A)}$
Power: 150VA
Pumping Rate: $\geq 20\text{L/Min}$
Reservoir Capacity: 2500ml/PC, 2PCS

MANUAL RESUSCITATORS

DISPOSABLE MANUAL RESUSCITATORS(PVC)



HG-IG-KB04
For Adults



HG-IG-KB05
For Child



HG-IG-KB06
For infants



Accessories:disposable(PVC) mask* 1,oxygen tubing(PVC)* 1,
reservoir bag(EVA)*1

Accessories(Optional):Mouth opener Airway

Features:

- Single patient use only
- Build-in-pressure relief valve.(60cm H₂O for adults 40cm H₂O for child and infant)
- The set includes oxygen reservoir bag,PVC mask and oxygen tubing
- 100% Medical level PVC material
- Latex-free components
- All-in-one intake valve connects to oxygen reservoir bag directly
- Additional accessories(Airway,mouth opener)and customized label are available
- Built-in-30mm exhale port PEEP or filter attachment

SOLID SILICONE MANUAL RESUSCITATORS



HG-IG-KB07
For Adults



HG-IG-KB09
For Child



HG-IG-KB10
For infants



Accessories Reusable: Silicone mask*1,Oxygen tubing(PVC)*1,
reservoir bag(EVA)*1

Accessories(Optional):Airway mouse opener

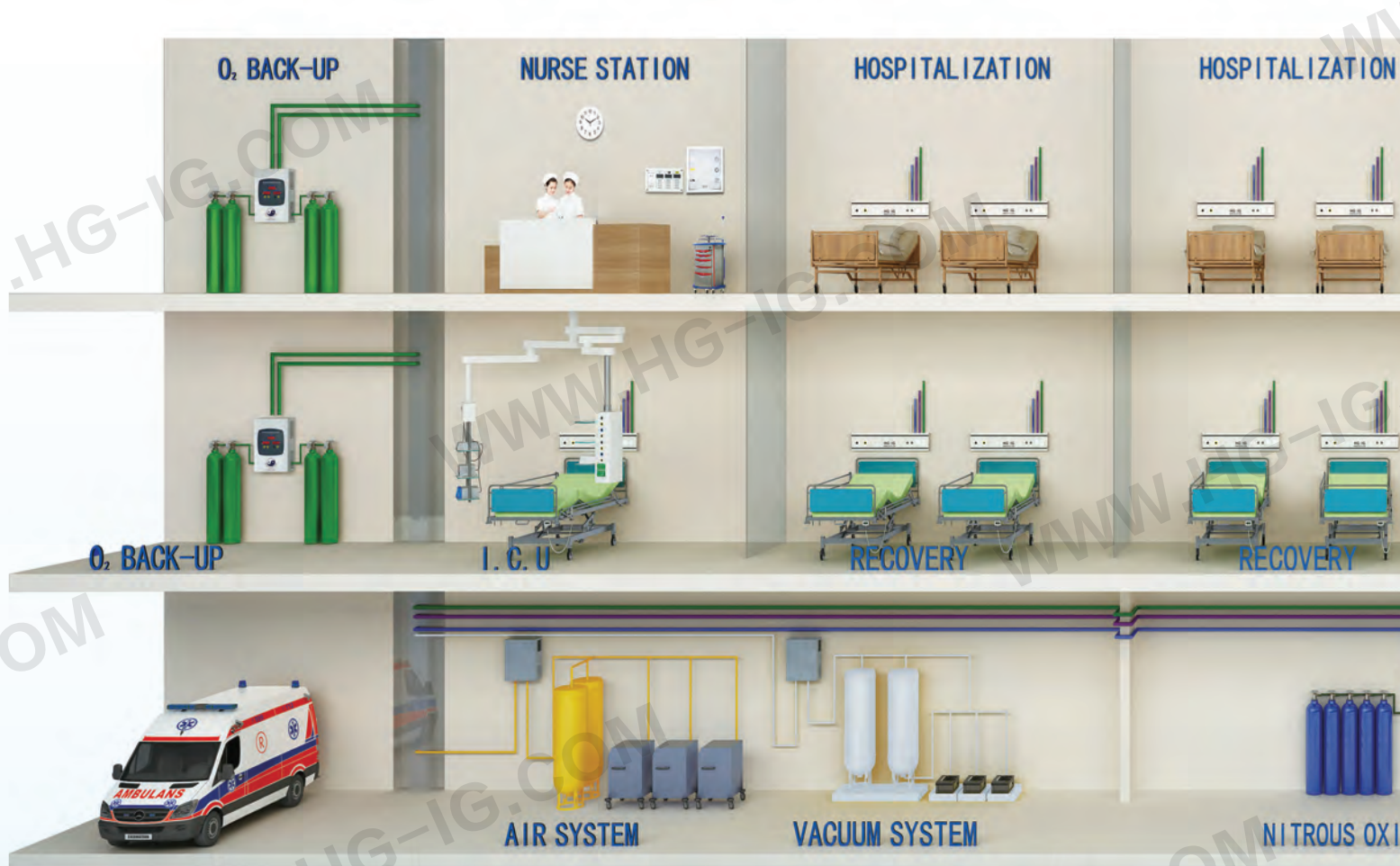
Features:

- Autoclave to 134°C helping to prevent cross infection and contamination
- Built-in-40cm H2o Pressure relief valve
- Latex-free high grade medical silicone material
- Guarantee for 5 years or alternatively 20 times autoclave cycles
- All-in-one intake valve connects to oxygen reservoir bag directly
- Additional accessories(Airway,mouth opener) and customized label are available

Model	Packing Size(12PCS/CTN)	G,W
HG-IG-KB04 ADULIT PVC	57x33.5x46	10.6KG
HG-IG-KB05 CHILD PVC	57x33.5x46	8.8KG
HG-IG-KB06 INFANT PVC	57x33.5x46	8.4KG
HG-IG-KB07 ADULIT SILICON	57x33.5x46	10.7KG
HG-IG-KB09 CHILD SILICON	57x33.5x46	9.0KG
HG-IG-KB10 INFANT SILICON	57x33.5x46	8.4KG

WWW.HG-IG.COM

WWW.HG-IG.COM



NANJING OCEAN GROUP CO.,LIMITED **NANJING OCEAN MEDICAL PRODUCTS CO.,LTD**

Address: No.2-10 Qiancheng Big Road, Zhongshan Technology Park,
Jiangbei New Area, Nanjing, China.

Mobile : +86 13611567698 & 13951071581

Tel: +86 25 58884862 / 58736786

Email : info@hg-ig.com

Website: WWW.HG-IG.COM